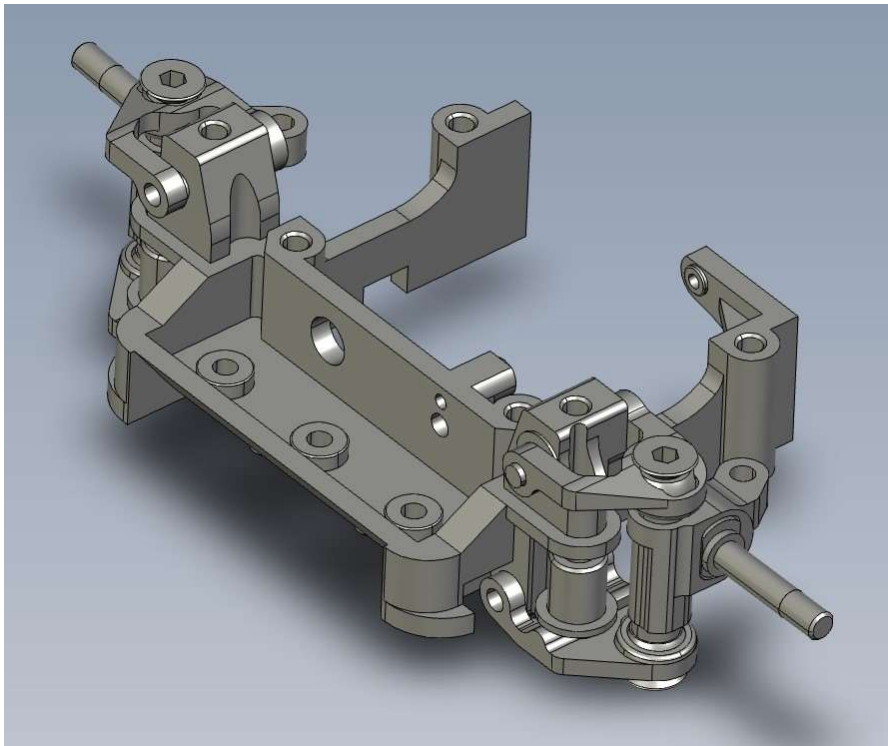




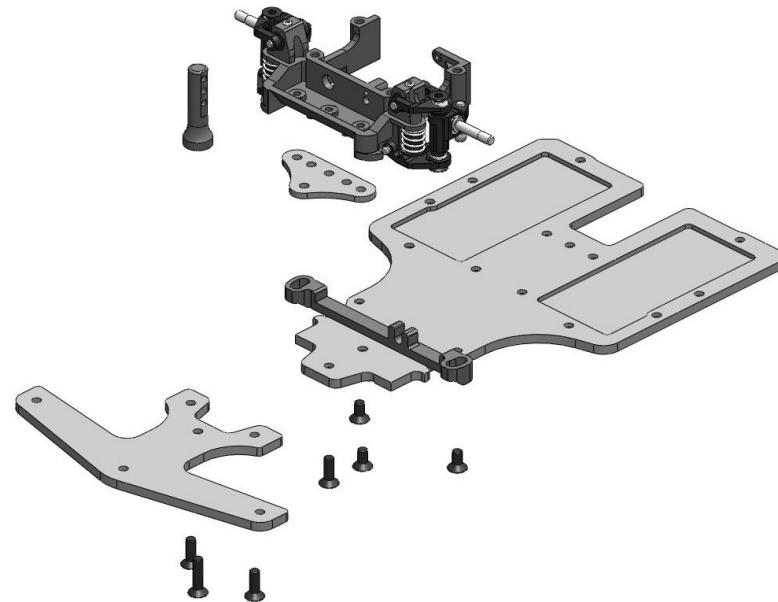
PNR3.0 F1 Chassis



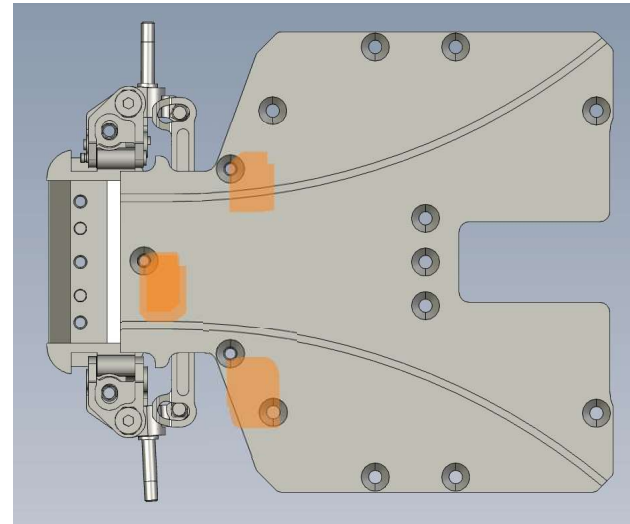
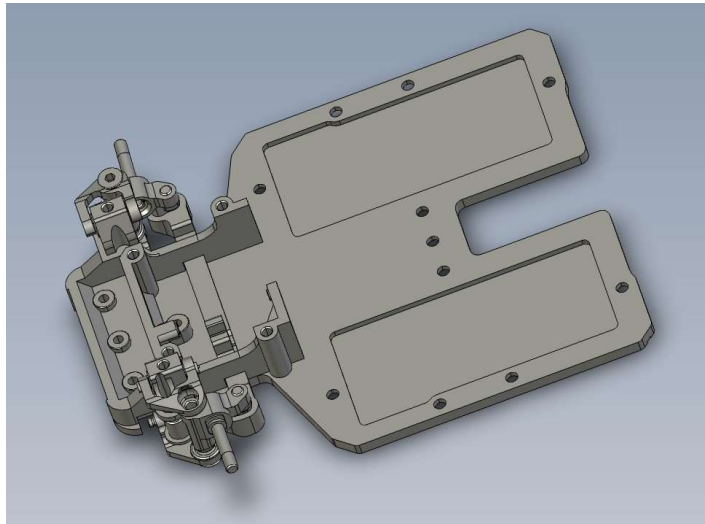
1. Install double a arm components onto front bulkhead.

The requirement to finish the chassis

- 1x PN Racing Double A-arm system or 900300D Front End Kit
- 2x 1S Lipo Batteries (PN# 7200380 or 722385)
- 1x 2S MOLEX Male Plug Harness Set (PN# 700255)
- 1x Micro servo (PN# 500380A)
- 1x 98mm Motor Mount (MR3300K or MR2395)
- 1x Micro Receiver
- 1x Micro ESC (PN# 500830 Anima V3 Bluetooth 30A Micro Sensored Brushless ESC)
- 1 x Gear Diff (PN#MR2055PC or Ball Diff PN#MR2049)
- 1 x Damper System (PN#MR2061)
- 2 x Front Wheel and Ball Bearing
- 2 x Rear Wheel and Ball Bearing

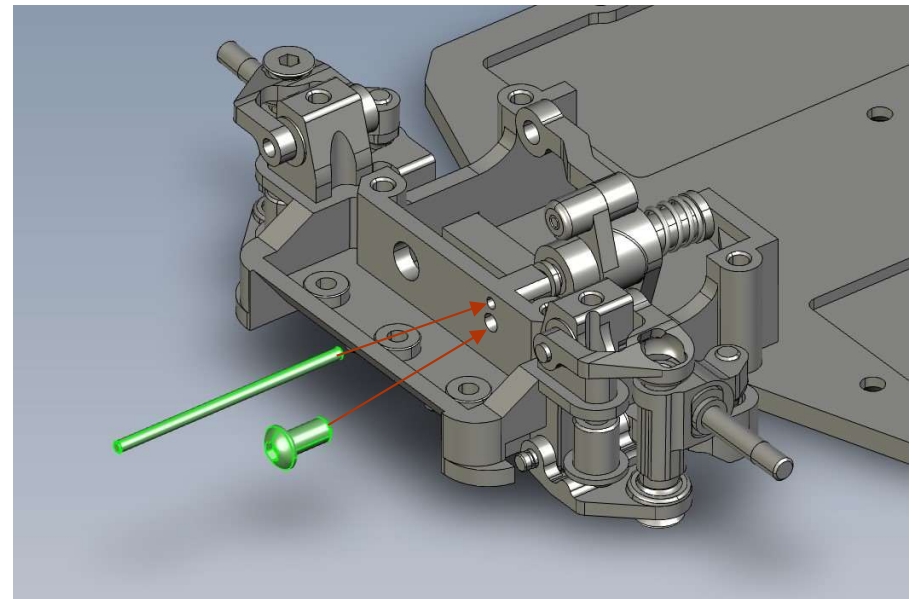


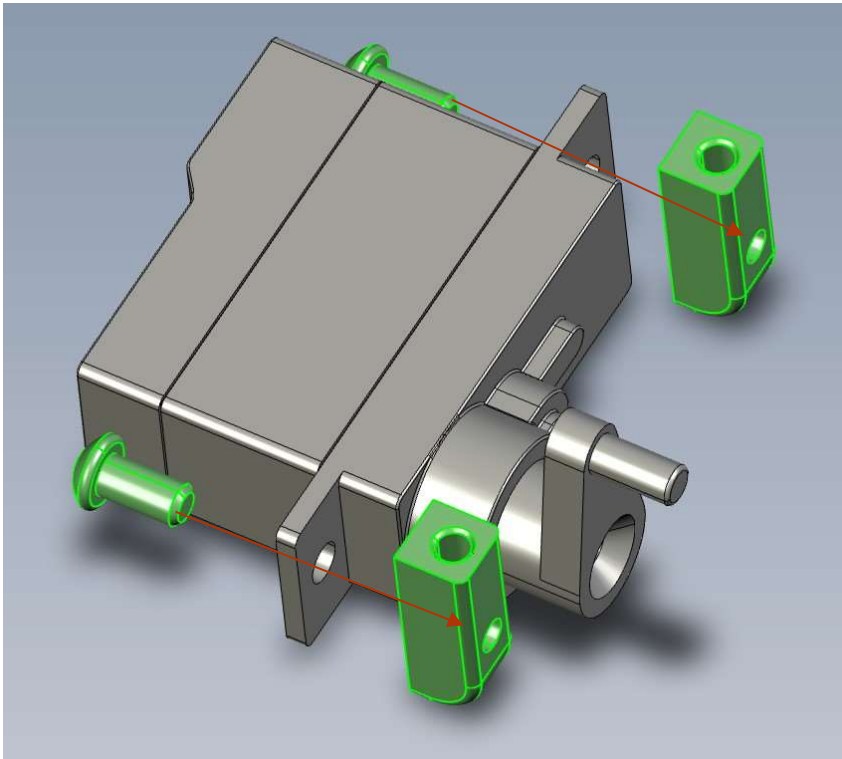
2. Insert tie rod into the slot and sandwich it between front suspension assembly and the chassis.



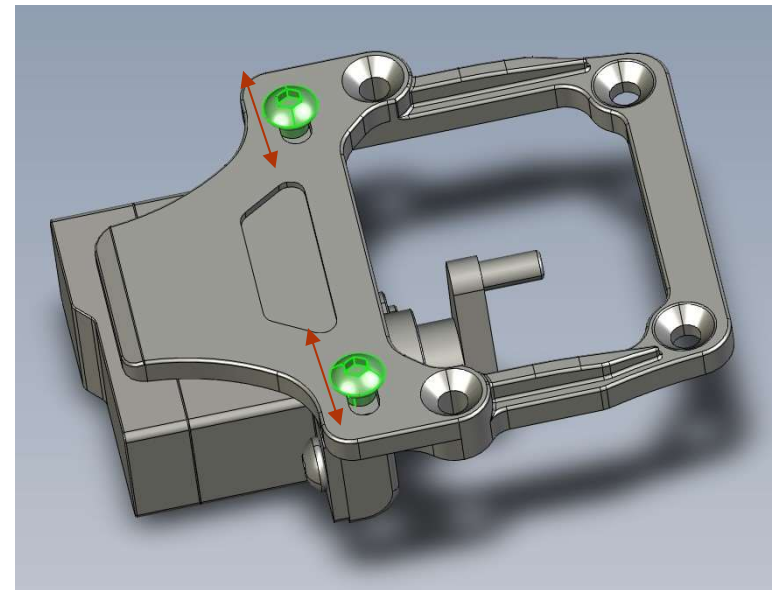
3. Secure front suspension assembly onto chassis using provided *** screws

4. Package comes with 2 pins, insert the long pin into servo saver and arm (marked “P”) and then secure it using provided *** screw. “servo saver can be used in MR03 when pairing with the shorter pin and servo arm (marked “K”)”

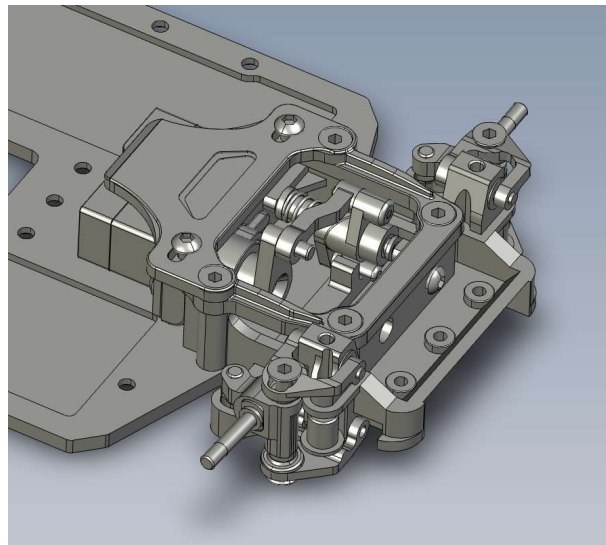




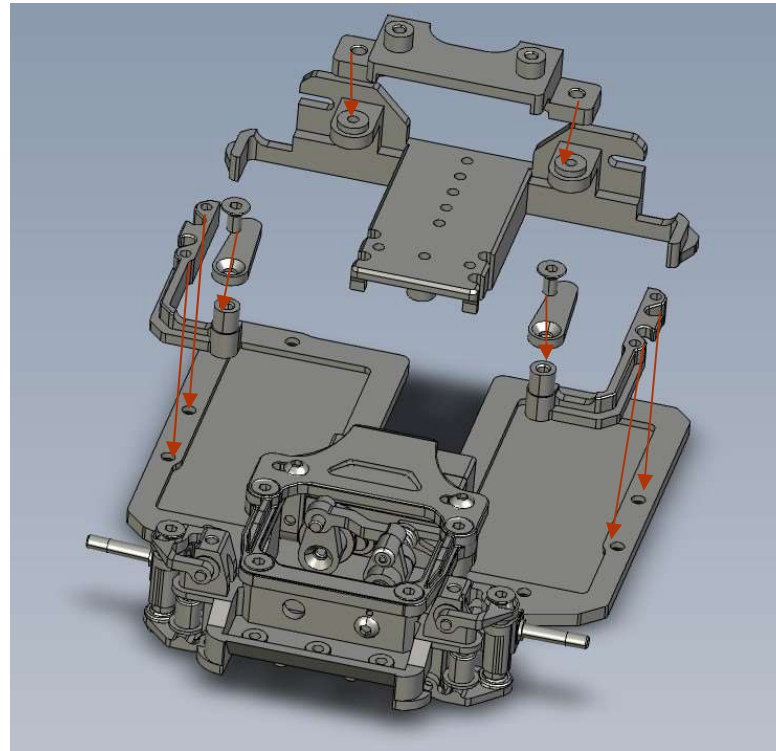
5. Install servo post onto servo using provided *** screws
(*Flat side facing servo)
*Note: Servo Horn Not Included



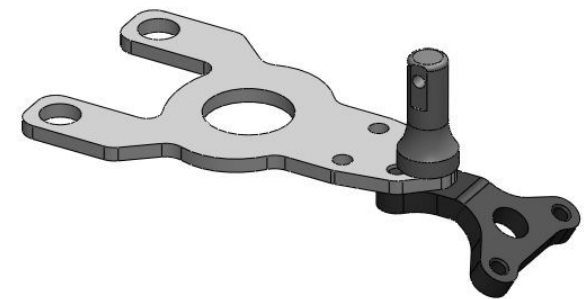
6. Install assembled servo unit onto servo mounting plate using provide *** screws (servo position can be adjusted)

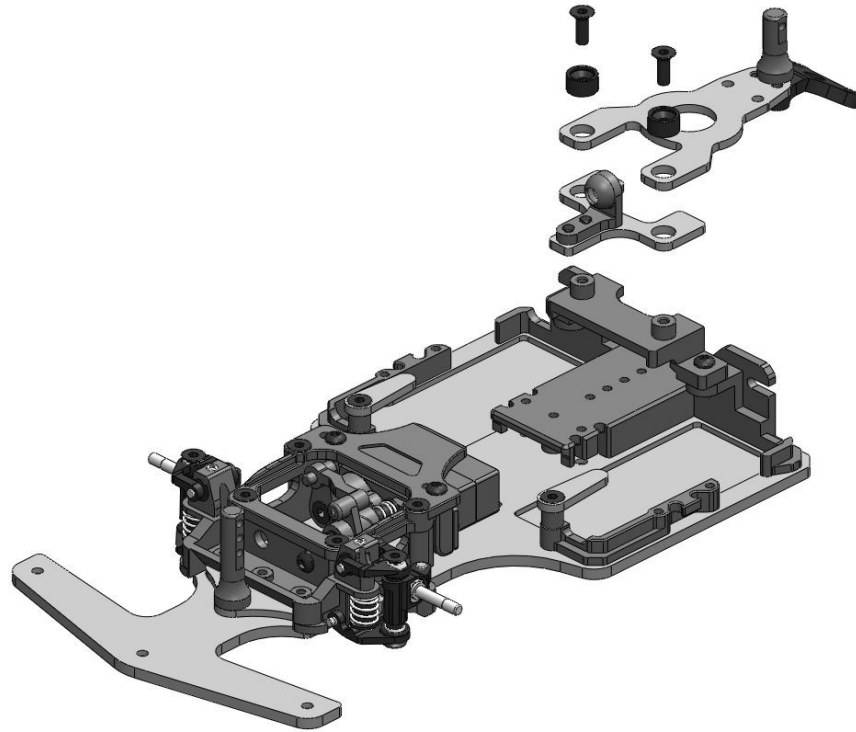


7. Install battery side guard onto the chassis using 4 provided ** screws,
Next install battery clips onto the side guards.
Finally install the top deck onto rear chassis base and secure the base onto the chassis using provide ** screws.



7. Prepare the damper with body post and wing mount, use M2x8 screw from bottom to top





8. Place battery holder ring in between the chassis and the rear base, make sure it's placed around the screw hole then install the provided screws from bottom of the chassis to secure the rings.

