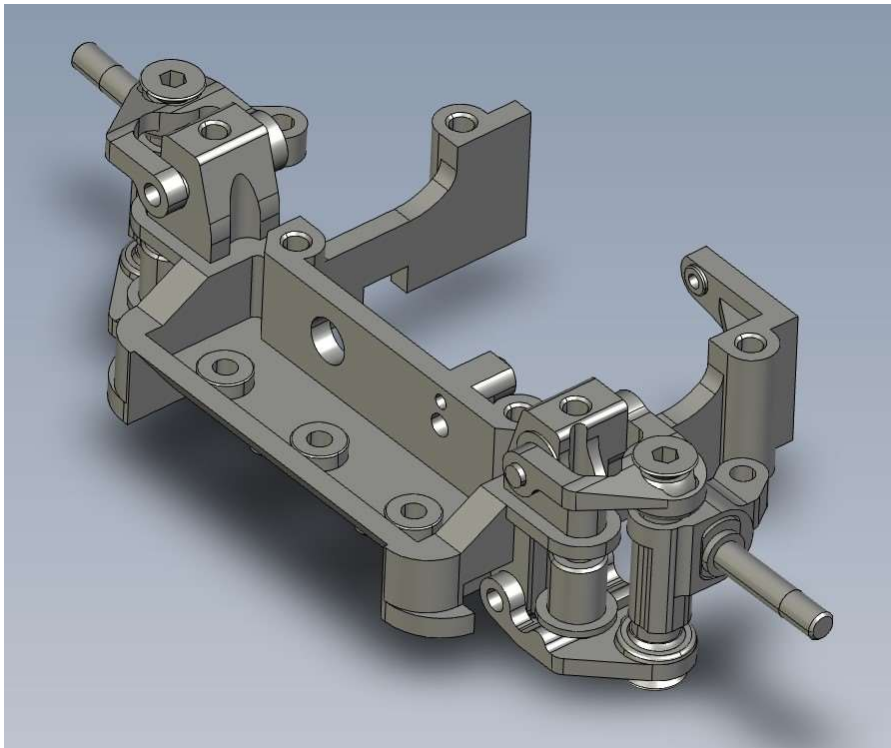




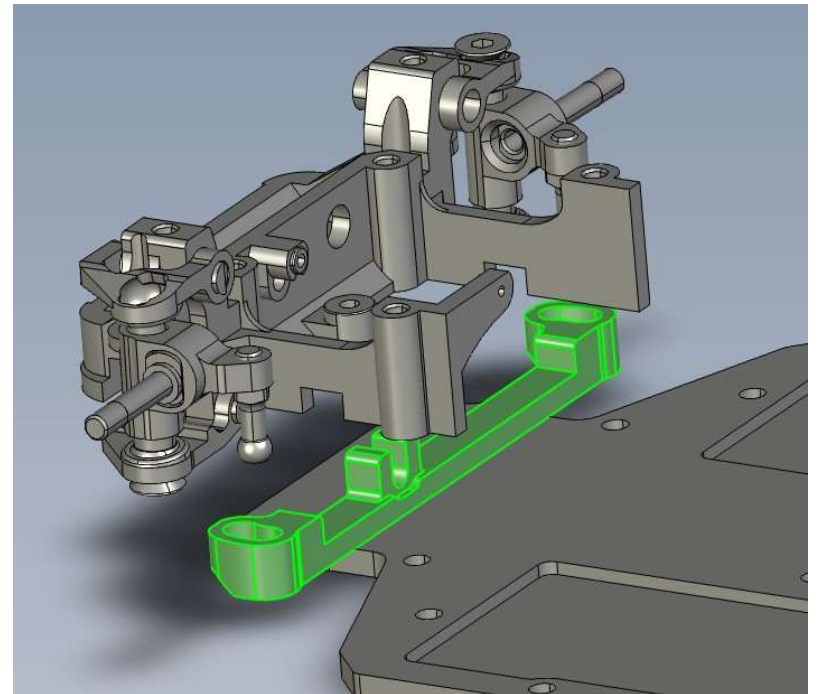
PNR3.0 Chassis

Requirement:

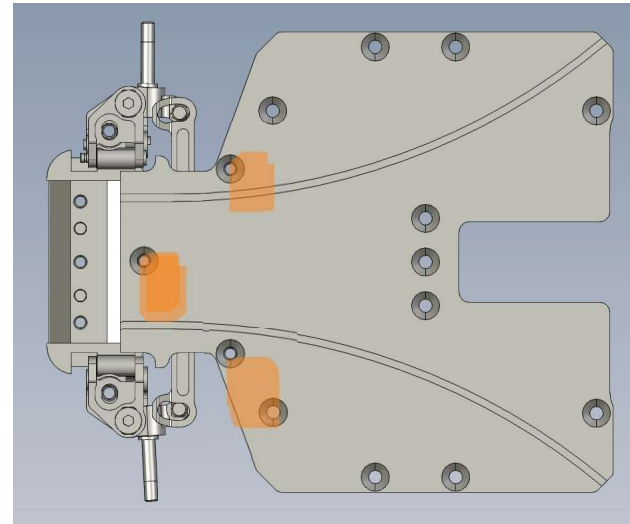
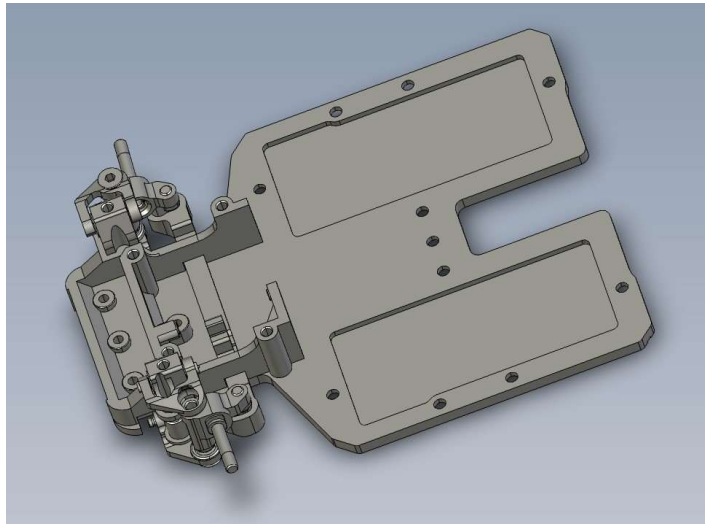
- 2x 1S Lipo Batteries (PN# 700430 or 700360)
- 1x Micro servo (PN# 500380A)
- 1x Motor Mount
- 1x PN Racing V3 or V4 Double A Arm system (V4 MR3080 V3 MR3070)
- 1x Micro Receiver
- 1x Micro ESC (PN# 500820, Teampowers TPR-M-RADON-V2.1)
- 1x 2S MOLEX Male Plug Harness Set (PN# 700255)
- 1 x T-plate or Gimbal System



1. Install double a arm components onto front bulkhead.

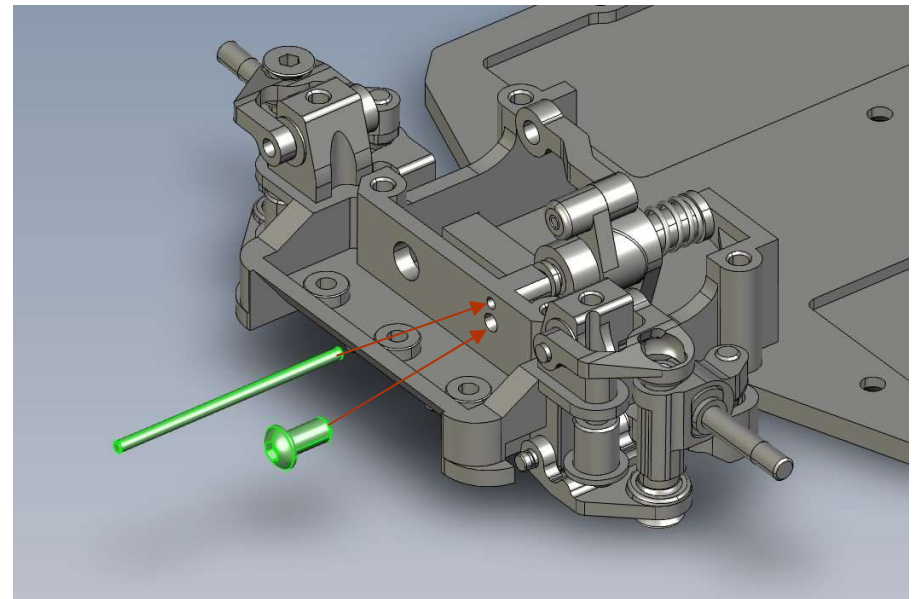


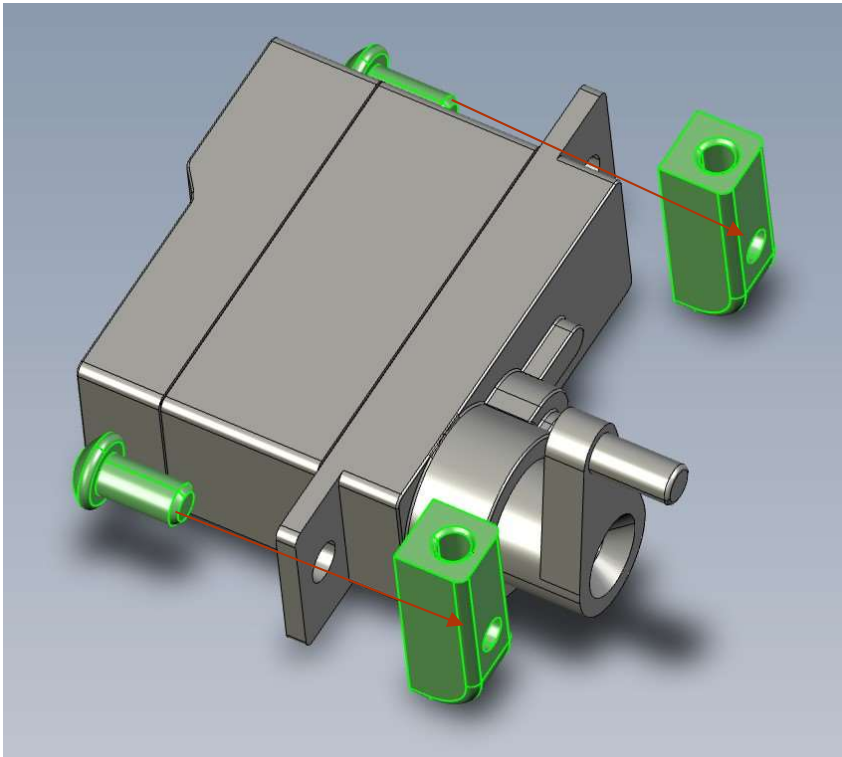
2. Insert tie rod into the slot and sandwich it between front suspension assembly and the chassis.



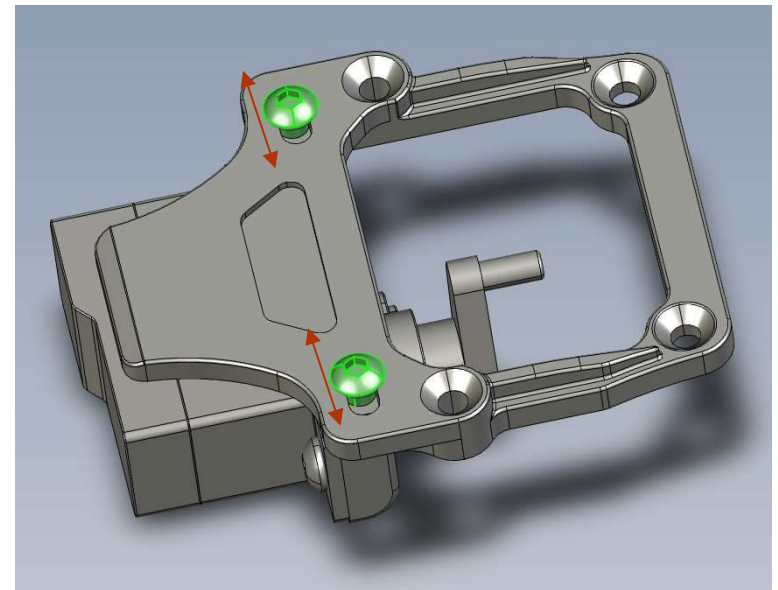
3. Secure front suspension assembly onto chassis using provided *** screws

4. Package comes with 2 pins, insert the long pin into servo saver and arm (marked “P”) and then secure it using provided *** screw. “servo saver can be used in MR03 when pairing with the shorter pin and servo arm (marked “K”)”

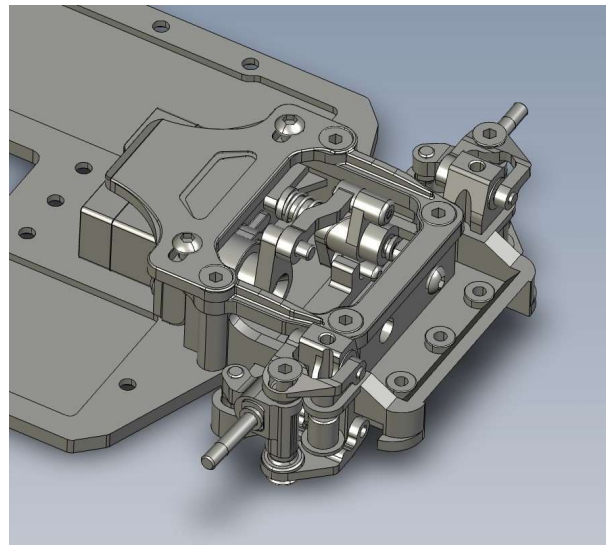




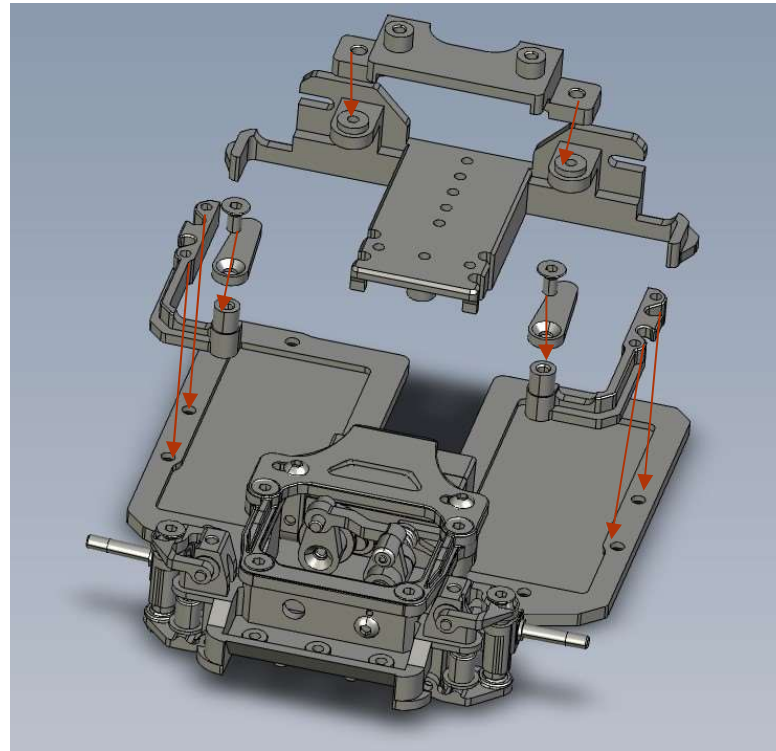
5. Install servo post onto servo using provided *** screws (*Flat side facing servo)



6. Install assembled servo unit onto servo mounting plate using provide *** screws (servo position can be adjusted)



7. Install battery side guard onto the chassis using 4 provided ** screws,
Next install battery clips onto the side guards.
Finally install the top deck onto rear chassis base and secure the base onto the chassis using provide ** screws.



8. Place battery holder ring in between the chassis and the rear base, make sure it's placed around the screw hole then install the provided screws from bottom of the chassis to secure the rings.

